

# OVERHEAD CONDUCTORS



**LITMUS**  
INDUSTRIES LIMITED



## Overview

**The foundation of Litmus Industries (formerly known as Lumbini Vidyut) dates back to 1977, laid with a vision of creating deep connections, value, and growth for our people, partners, and stakeholders.**

As Nepal's leading manufacturer of wires, cables, and conductors, Litmus is the largest company in the sector and the first and only public company in this field. Playing a vital role in Nepal's electrification journey, Litmus provides reliable products that strengthen the nation's energy infrastructure. Our brand expression, Electrifying Nepal, reflects its mission of bringing innovation and energy to power a brighter future, much like the first rays of sunlight bringing hope to a new day.

Since 2014, under the purview of Ramesh Corp, Litmus has driven progressive change. As the foremost and most trusted brand in Nepal's wires, cables, and conductors industry, we take immense pride in illuminating an electrified Nepal. Our commitment remains unwavering as we advance in harmony with the nation's growth agenda, contributing to its vitality and progress.

# Certifications

The Litmus manufacturing facilities are proud to have ISO 9001:2015 certification, guaranteeing a quality management system that ensures the consistent delivery of products that meet customer, statutory, and regulatory requirements.

Litmus products have obtained certifications from the Nepal Bureau of Standards and Metrology and ISI certification from the Bureau of Indian Standards, demonstrating our dedication to providing quality products in Nepal.

In recognition of our unwavering commitment to superior quality, Litmus received the "NS Quality Award" from the government of Nepal in 2010, distinguishing us as the only cable manufacturing company in Nepal to be honored for such excellence.

Some of our products have prestigious certifications like KEMA for energy utilization, as well as CPRI, TAG, and ERDA certificates, which not only increase their acceptance in Nepal but also in other South Asian countries. These awards, accolades, and certifications highlight Litmus' dedication to innovation, propelling us towards a brighter and more innovative future.





## Range of Products

As Nepal’s largest manufacturer of wires, cables, and conductors, Litmus Conductors offers a full range of standard conductors designed for diverse applications. Each conductor type has specific strengths and is best suited for particular conditions. We are fully equipped to manufacture all types of conductors to meet our customers' unique requirements.

All Aluminium Conductor (AAC)	All Aluminium Alloy Conductor (AAAC)	Aluminium Conductor Steel Reinforced (ACSR)	AL- 59 Conductors
Made of 1350-H19 Aluminium	Made of 620 Al Alloy	Made of 1350-H19 Al & Galvanized Steel Core	Made of AL-59 Alloy
Highest conductivity & moderate strength.	High conductivity & strength.	Highest strength & good conductivity.	Highest conductivity and low sag
Ideal installation in urban areas for short span with maximum current transfer.	Ideal installation on the seacoast & corrosion prominent areas.	Ideal installation for long spans & extensively used in transmission & rural distribution circuits.	Suitable for the upgradation of existing lines to increase power transmission capacity.

# ALUMINIUM CONDUCTOR STEEL REINFORCE (ACSR)

## AS PER BS 215

PACKAGING: In Wooden or M.S. Drum as required by client.

CODE	NOM. AL AREA	EQUIV COPPER AREA	STRANDING AND WIRE DIAMETER		T	AREA			WEIGHT			NOMINAL BREAKING LO AD	Max. DC Resistance AT 20°C	Current Carrying Capacity at 45 Deg. Cel.
			AL	STEEL		AL	STEEL	TOTAL	AL	STEEL	TOTAL			
	mm2	mm2	mm	mm	mm	mm2	mm2	mm2	Kg/Km	Kg/Km	Kg/Km	N	Ohm/Km	A
Mole	10	6.5	6/1.50	1/1.50	4.50	10.60	1.77	12.36	29	14	43	4130	2.706	90
Squirrel	20	12.9	6/2.11	1/2.11	6.33	20.98	3.49	24.48	58	27	85	7910	1.370	130
Gopher	25	16.1	6/2.6	1/2.36	7.08	26.25	4.37	30.62	72	34	106	9600	1.093	150
Weasel	30	19.4	6/2.59	1/2.59	7.77	31.61	5.27	36.88	87	41	128	11440	0.9077	170
Rabbit	50	32.3	6/3.35	1/3.35	10.05	52.88	8.81	61.70	145	69	214	18360	0.5426	240
Other	80	51.6	6/4.22	1/4.22	12.66	83.92	13.99	97.91	230	109	339	28820	0.3419	310
Dog	100	64.5	6/4.72	7/1.57	14.15	105.0	13.55	118.60	288	106	394	32700	0.2733	360
Wolf	150	96.8	30/2.59	7/2.59	18.13	158.1	36.68	194.9	437	289	726	69240	0.1828	470
Panther	200	129	30/3.00	7/3.00	21.00	212.1	49.48	261.6	586	388	974	92250	0.1363	560
Jaguar	200	130	18/3.86	1/3.86	19.30	210.6	11.70	222.3	580	91	671	46600	0.13670	560
Bear	250	161	30/3.35	7/3.35	23.45	264.4	61.70	326.1	730	483	1213	111120	0.1093	650
Bison	350	226	54/3.00	7/3.00	27.00	381.17	49.48	431.2	1056	388	1444	120900	0.07573	800
Deer	400	258	30/4.27	7/4.27	29.89	429.6	100.2	529.8	1186	785	1971	178500	0.06726	870
Zebra	400	258	54/3.18	7/3.18	28.62	428.9	55.60	484.5	1186	435	1621	131900	0.06740	860
Camel	450	290	54/3.35	7/3.35	30.15	475.9	61.70	537.6	1314	483	1797	145900	0.06073	920
Moose	500	323	54/3.53	7/3.53	31.77	528.5	68.51	597.0	1462	537	1999	161000	0.05470	980

\*\*All data set out in this catalogue is given for indication purpose only.

Note: The current carrying capacity of conductors depends on environmental factors such as wind speed, solar radiation, ambient temperature, and installation conditions.



# ALUMINIUM CONDUCTOR STEEL REINFORCE (ACSR)

AS PER IS 398: 1996 Part II / NS 259: 2048

APPROXIMATE CALCULATED RESISTANCE AT 20° C APPROXIMATE CALCULATED BREAKING LOAD

NOMINAL ALUMINIUM	STRANDING AND WIRE DIAMETER		SECTIONAL AREA OF ALUMINIUM	TOTAL SECTIONAL AREA	APPROXIMATE DIAMETER	(7) Kg/Km	(8) Ohm/Km	(9) kN
	ALUMINIUM	STEEL						
(1)	(2)	(3)	(4)	(5)	(6)	43	2.780	3.97
mm2	mm2	mm	mm2	mm2	mm	73	1.618	6.74
10	6/1.50	1/1.50	10.60	12.37	4.50	85	1.394	7.61
18	6/1.96	1/1.96	18.10	21.12	5.88	128	0.9289	11.12
20	6/2.11	1/2.11	20.98	24.48	6.33	214	0.5524	18.25
30	6/2.59	1/2.59	31.61	36.88	7.77	319	0.3712	26.91
50	6/3.35	1/3.35	52.88	61.70	10.05	394	0.2792	32.41
80	6/4.09	1/4.09	78.83	91.97	12.27	726	0.1871	67.34
100	6/4.72	7/1.57	105.0	111.5	14.15	974	0.1390	89.67
150	30/2.59	7/2.59	158.1	194.9	18.13	1281	0.07311	88.79
200	30/3.00	7/3.00	212.1	261.5	21.00	1621	0.06868	130.32
400	30/4.27	7/1.96	404.1	425.2	26.88	1998	0.05595	159.60
400	54/3.18	7/3.18	428.9	484.5	28.62	1781	0.05231	120.16
520	54/3.53	7/3.53	528.5	597.0	31.77			
560	42/4.13	7/2.30	562.7	591.7	31.68			

\*\*All data set out in this catalogue is given for indication purpose only.



# LAY RATIO OF ALUMINIUM CONDUCTORS STEEL REINFORCED

(CLASUES 10.2, 10.3 & 13.8 AS PER IS 398: PART II)

NUMBER OF WIRES		RATIO OF ALUMINIUM WIRE		LAY RATIOS FOR STEEL CORE		LAY RATIOS FOR ALUMINIUM WIRE				
ALUMINIUM STEEL		DIAMETER TO STEEL WIRE DIAMETER		(6 WIRE LAYER)		OUTER MOST LAYER		Layer immediately beneath Outermost layer		Innermost layer of conductors with 3 aluminum wire layers
			MIN	MAX	MIN	MAX	MIN	MAX	MIN	MAX
1	2	3	4	5	6	7	8	9	10	11
6	1	1.0	----	----	10	14	----	----	----	----
6	7	3.0	13	28	10	14	----	----	----	----
30	7	1.0	13	28	10	14	10	16	----	----
42	7	1.8	13	28	10	14	10	16	10	17
54	7	1.0	13	28	10	14	10	16	10	17

## STRANDING CONSTRAINTS FOR ACSR

NUMBER OF WIRES IN CONDUCTOR		MASS		STRANDING CONSTANT
ALUMINIUM 1	STEEL 2	ALUMINIUM 3	STEEL 4	ELECTRIC RESISTANCE 5
6	0	6.091	1.000	0.1692
6	7	6.091	7.032	0.1692
30	7	30.67	7.032	0.03408
42	7	42.90	7.032	0.02432
54	7	55.23	7.032	0.01894

\*\*Note- For the purpose of calculation, the mean lay ratio shall be taken as the arithmetic mean of the relevant minimum & maximum values given in this table.

# ALL ALUMINIUM ALLOY CONDUCTOR (AAAC)

AS PER BS 3242: 1970/IS 398 PART IV

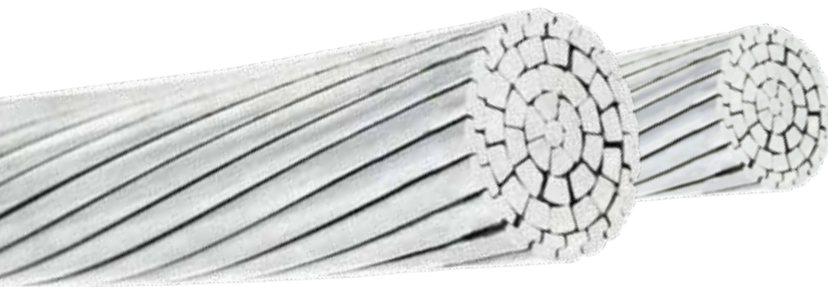
CODE	NOMINAL ALUMINIUM AREA	EQUIVALENT COPPER AREA	STRANDING AND WIRE DIAMETER	APPROX. OVERALL DIAMETER	TOTAL	WEIGHT	NOMINAL BREAKING LOAD	MAXIMUM DC RESISTANCE AT200 C
	mm <sup>2</sup>	mm <sup>2</sup>	mm	mm	mm <sup>2</sup>	Kg/Km	Kgf	Ohm/Km
Box	15	9.68	7/1.85	5.55	18.81	51	536	1.750
Acacia	20	12.9	7/2.08	6.24	23.78	65	684	1.384
Almond	25	16.1	7/2.34	7.02	30.10	82	862	1.094
Cedar	30	19.4	7/2.54	7.62	35.47	97	1015	0.9281
-	35	22.6T	7/2.77	8.31	42.18	115	1206	0.7803
Fir	40	25.8	7/2.95	8.85	47.84	131	1366	0.6880
Hazel	50	32.3	7/3.30	9.90	59.87	164	1713	0.5498
Pine	60	38.7	7/3.61	10.83	71.65	196	2050	0.4593
-	70	45.2	7/3.91	11.73	84.05	230	2404	0.3916
Willow	80	48.4	7/4.04	12.12	89.73	246	2568	0.3668
-	90	51.6	7/4.19	12.57	96.51	264	2759	0.3410
-	100	58.1	7/4.45	13.35	108.8	298	3110	0.3026
Oak	100	64.5	7/4.65	13.95	118.9	325	3396	0.2769
-	100	64.5	19/2.82	14.31	118.8	326	3391	0.2787
Mulberry	125	80.6	19/3.18	15.9	151.1	415	4312	0.2190
Ash	150	96.8	19/3.48	17.4	180.7	497	5165	0.1830
Elm	175	113.0	19/3.76	18.8	211.0	580	6029	0.1568
Poplar	200	129.0	37/2.87	20.09	239.0	658	6840	0.1385
-	225	145.0	37/3.05	21.35	270.8	745	7725	0.1226
Sycamore	250	161.0	37/3.23	22.61	303.0	835	8664	0.1094
Upas	300	194.0	37/3.53	24.71	362.1	997	10350	0.09155
-	350	226.0	37/3.81	26.67	421.8	1162	12055	0.07860

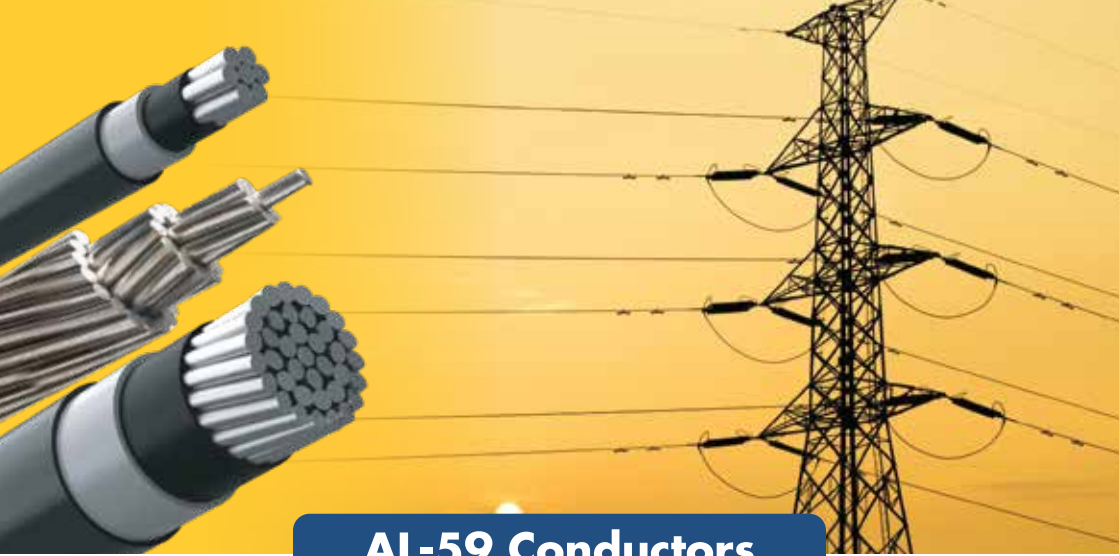


# ALL ALUMINIUM CONDUCTOR (AAC)

AS PER BS 215: PART I/IS 398: PART I

CODE	NOMINAL ALUMINIUM AREA	EQUIVALENT COPPER AREA	STRANDING AND WIRE DIAMETER	APPROX. OVERALL DIAMETER	TOTAL	WEIGHT	NOMINAL BREAKING LOAD	MAXIMUM DC RESISTANCE AT 200 C
	mm <sup>2</sup>	mm <sup>2</sup>	mm	mm	mm <sup>2</sup>	Kg/Km	Kgf	Ohm/Km
Weevil	30	19.4	3/3.66	7.9	31.6	86	496	0.9082
Ladybird	40	25.8	7/2.79	8.4	42.8	117	701	0.6687
Ant	50	32.3	7/3.10	9.3	52.8	145	846	0.5419
Fly	60	38.7	7/3.40	10.2	63.6	174	1010	0.4505
Bluebottle	70	45.2	7/3.66	11.0	73.7	202	1156	0.3884
Grasshopper	80	51.6	7/3.91	11.7	84.1	230	1303	0.3405
Clegg	90	58.1	7/4.17	12.5	95.6	262	1482	0.2994
Wasp	100	64.5	7/4.39	13.2	106.0	290	1632	0.2700
Bee	125	80.6	7/4.90	14.7	132.0	361	2033	0.2167
Cricket	150	96.8	7/5.36	16.1	157.9	432	2432	0.1812
Homert	150	96.8	19/3.25	16.3	157.6	434	2519	0.1825
Caterpillar	175	113.0	19/3.53	17.7	186.0	512	2920	0.1547
Chafer	200	129.0	19/3.78	18.9	213.2	587	3304	0.1349
Spider	225	145.0	19/3.99	20.0	237.6	652	3672	0.1211
Cockroach	250	161.0	19/4.22	21.1	265.7	731	4120	0.10830
Butterfly	300	194.0	19/4.65	23.3	322.7	888	4966	0.08912
Moth	350	226.0	19/5.00	25.0	373.2	1027	5748	0.07709
Centipede	400	258.0	37/3.78	26.5	415.2	1145	6434	0.06944





## AL-59 Conductors

After pioneering the manufacturing of **ACSR Conductors, Aerial Bunched (ABC) Cables, and Medium Voltage XLPE Covered Conductors**, Litmus has now introduced **AL-59 conductors** in Nepal.

AL-59 conductor is an aluminium alloy conductor composed of Al-Mg-Si (aluminium-magnesium-silicon), designed for overhead power transmission and distribution lines. The resulting conductor is lightweight and strong, ensuring high electrical conductivity. Its advanced composition enhances efficiency, reduces energy losses, and provides exceptional durability.

### Applications:

- High-voltage transmission lines (132 kV, 220 kV, 400 kV).
- Long-span river crossings and hilly terrains.
- Upgrading existing ACSR lines for better efficiency.

### Product Type:

- Al 59 overhead Bare conductor
- Al 59 Covered conductor

### FEATURES:

Lightweight yet high-strength design ideal for long-distance power transmission, reducing load on towers and poles. Offers superior electrical conductivity with minimal loss compared to pure aluminium. Excellent corrosion resistance in humid and harsh climates, minimizing maintenance and replacement needs. Cost-effective solution for transmission lines without sacrificing performance or durability.

# Technical Specification

AL 59 ALLOY CONDUCTOR - AS PER IS 398 (PART - VI)

NOMINAL ALUMINIUM AREA	STRANDING		Overall Dia. (mm) (Approx.)	CONDUCTOR WEIGHT kg/km	RESISTANCE AT 20 DEG C	ULTIMATE BREAKING LOAD (KN)
	NO. OF WIRES	WIRE DIAMETER				
		(mm)				
15	3	2.5	5.39	40.15	1.992	3.5
22	7	2	6	60.15	1.3379	5.2
34	7	2.5	7.5	93.98	0.8563	8.2
80	7	3.81	11.43	218.28	0.3687	18.2
100	7	4.26	12.78	272.88	0.2949	21.8
125	19	2.89	14.45	342.55	0.2372	29.6
173	19	3.4	17	474.09	0.1714	41
200	19	3.66	18.3	549.39	0.1479	45.6
276	37	3.08	21.56	759.2	0.1075	65.47
454	61	3.08	27.72	1254.34	0.0653	108
484	61	3.18	28.62	1337	0.0613	115.1
525	61	3.31	29.79	1448.61	0.0566	124.7
554	61	3.4	30.6	1528.44	0.0536	131.53
594	61	3.52	31.7	1638.23	0.0501	135.4
642	61	3.66	32.94	1771.16	0.0463	146.4
695	61	3.81	34.29	1919.3	0.0427	158.6
774	61	4.02	36.18	2136.69	0.0384	169.17

# Comparison between AL-59 & ACSR conductor

Features	AL-59	ACSR
Material	Special Al-Mg-Si alloy (no steel core)	Aluminium strands over a galvanised steel core
Strength	Higher than AAC, but less than steel-reinforced ACSR	Very high due to the steel core
Current Carrying Capacity	Higher than ACSR of the same size (≈26–31% more)	Lower compared to AL-59 of the same size
Losses	Minimal losses (higher efficiency)	Higher losses than AL-59
Corrosion Resistance	Excellent (no steel, so no galvanic corrosion)	Prone to corrosion at the aluminium–steel interface
Weight	Lighter	Heavier (due to steel core)
Sag Characteristics	~8% less sag than ACSR (alloy resists elongation better)	More sag at high temperatures
Cost	If valued for better performance, especially in high-load, long-span, or corrosive environments, AL-59 offers more economic benefits over time	If the lowest initial cost is the priority, ACSR is cheaper per kilometre.

## AERIAL BUNDLED CABLES (ABC)

AB Cables is also called Aerial Bundled Cable or is simply referred to as AB Cable. Aerial Bundled Cables (ABC) is a very novel concept for overhead Power Distribution System. When compared to the conventional bare Conductor Overhead Distribution System, ABC provides higher safety and reliability, lower power losses and ultimate system economy by reducing installation, maintenance and operative cost.

Aerial Bundled Cables, 1100 volt Grade, are used for distributing power to individual consumers by utility service providers like Electricity Distributing Authorities. The Cable is kept supported on poles. The line is tapped intermittently from any required position which enables to be used in urban as well as rural areas alike.

### AERIAL BUNDLED CABLE FOR LT LINES

In the ABC system, the insulated conductors (3 or 4 numbers as required) are twisted around a high strength Aluminium or Aluminium Alloy Bare Wire or insulated core, which carries the main weight and also serves as the earth-cum-neutral wire. The phase conductors are not under tension. The system is very safe and LT faults are practically eliminated.



#### MANUFACTURING SIZES:

1CX25SQMM+1CX25SQMM.

3CX25SQMM+1CX25SQMM.

3CX50SQMM+1CX35SQMM.

3CX95SQMM+1CX70SQMM.

3CX120SQMM+1CX70SQMM.

3CX150SQMM+1CX70SQMM.

# TECHNICAL CHARACTERISTICS OF AERIAL BUNDLED CABLE (ABC)

AB Cable Type (sq.mm.)	Minimum Number of Strands		Minimum thickness of insulation (mm)		Max. DC resistance at 20 °C (Ω/km)		Minimum Tensile strength of messenger (kN)	Approx. Overall Diameter of Cable (mm)	Approx. weight of cable (kg/mm)	Current Carrying Capacity at 45 Deg. Cel. (A)
	Phase	Messenger	Phase	Messenger	Phase	Messenger				
3x150+1x70	19	7	1.8	1.5	0.206	0.492	19.7	50	1791	98
3x120+1x70	19	7	1.7	1.5	0.243	0.492	19.7	46	1482	145
3x95+1x70	19	7	1.6	1.5	0.320	0.492	19.7	42.7	1237	235
3x50+1x35	7	7	1.5	1.2	0.641	0.986	9.8	32.3	692	270
3x25+1x25	7	7	1.2	1.2	1.2	1.38	7.0	25	390	295
1x25+1x25	7	7	1.2	1.2	1.2	1.38	7.0	22.4	195	295

Note: The current carrying capacity of conductors depends on environmental factors such as wind speed, solar radiation, ambient temperature, and installation conditions.

## TECHNICAL DATA: SELF SUPPORTING LV ABC

Nominal cross sectional area, mm <sup>2</sup>	25	50	95
Number of Core	4	4	4
Form of conductor	Stranded	Compacted	Stranded
Number of wires in conductor	7	7	19
Min. diameter of conductor, mm	5.8	8.0	11.3
Max. dc resistance of conductor at 20 deg.C, Ohm/km	1.200	0.641	0.320
Min. breaking load of conductor, kN	3.5	7.0	13.3
Min. average thickness of insulation excluding ribs, mm	1.3	1.5	1.7
Min. thickness of insulation at any point, mm	1.07	1.25	1.43
Min. breaking load of cable, kN	14.0	28.0	53.0

## Litmus Medium Voltage (11/33KV) XLPE Covered Conductors

Litmus introduces Nepal's first Medium Voltage XLPE Covered Conductor, setting new standards in durability and reliability. Featuring triple-layer insulation, anti-tracking properties, and fire-resistant XLPE, it ensures superior safety and efficiency, making it ideal for forested and remote areas.

Tested in NABL-accredited labs, with an annual production capacity of 20,000 KM, Litmus is driving sustainable energy independence, delivering innovative solutions for a resilient future.

### Standards and References

Manufactured to meet global standards

● IEC 61089

● IS 398 Part II, IV and VI

● BS EN 50182/50397



## ▶ Key Features

### 1. Anti-tracking Properties

- XLPE/HDPE conductors fail quickly without anti-tracking properties: Litmus's jacket ensures lasting reliability in 13.8–34.5KV networks.
- Engineered for harsh conditions, it protects against arc, corrosion, oil, humidity, pollution, and salt, with rigorous testing.

### 2. Longitudinal Water Blocking

- Prevents water ingress along the conductor using specialized materials.
- Ensures durability and reliability in power distribution systems.

### 3. Triple Extrusion Insulation

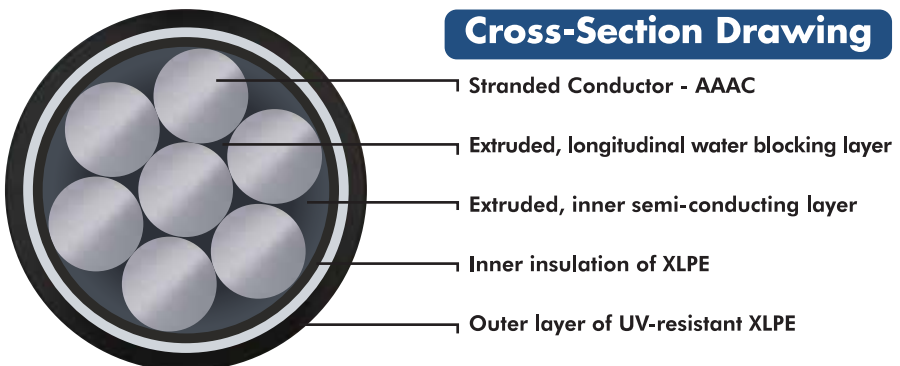
- Triple-layer extrusion (conductor shield, insulation, insulation shield) ensures superior electrical performance and durability.
- This process ensures seamless bonding, boosting conductor reliability in harsh environments.

### 4. Semi-Conductor Layer

- Provides uniform electric field distribution.
- Reduces electrical stress and enhances long-term insulation performance.

### 5. Inner XLPE Insulation

- Low-density cross-linked polyethylene for superior dielectric strength.
- Offers excellent environmental resistance and tracking prevention.



# ULTIMATE CHOICE FOR RELIABLE, SAFE, AND COST-EFFICIENT POWER TRANSMISSION



## Enhanced Durability

Longer lifespan with reduced wear and tear, ensuring reliable power distribution over time.



## Weather Resilience

Performs exceptionally well in harsh conditions like heavy snow, storms, and strong winds, minimizing outages.



## Cost-Effective Design

Reduced right-of-way (ROW) requirements and optimized phase-to-phase spacing lower infrastructure costs.



## Wildlife and Environmental Safety

Protects against interference from vegetation and ensures safety for birds and animals.



## Reliable Power Supply

Ensures uninterrupted performance, making it ideal for both urban and remote areas.

## Dimensions of MVCC

Cross-Section (Sq.mm)	Construction	Type
55	7 strands x 3.15 mm	Al-6201, Al-59, Al-7
100	7 Strands x 4.26 mm	Al-6201, Al-59, Al-7

## Description of the Conductor

11/33KV				
S. No.	Description	Unit	55 mm <sup>2</sup> Conductor	100 mm <sup>2</sup> Conductor
1	Actual Area	mm <sup>2</sup>	55	100
2	Stranding & Wire Diameter	mm	7/3.15	7/4.26
3	Approximate overall Diameter	mm	9.45	12.78
4	Approximate Weight	Kg/km	149.20	272.86
5	Maximum calculated D.C Resistance at 20°C	Ω/km	0.6210	0.3390
6	Approximate calculated breaking load	kN	16.03	29.26
7	Current Rating	Amps	234	325

The cable shall be suitable for use within Nepal and the climatic conditions are

- a) Maximum ambient temperature **40°C**
- b) Minimum ambient temperature **-5°C**
- c) Relative humidity **10 to 100%**
- d) Average rainfall per annum **2,000 mm**
- e) Maximum height above the sea level **2,000 m**
- f) Maximum wind pressure/wind speed **150 kg/m<sup>2</sup>/50 m/sec**

No.	Description	Unit	Nominal Thickness	
			11KV	33KV
1.	Aluminium Alloy Wire	Sq.mm	As per requirement	
2.	Extruded Longitudinal Water Blocking Layer	mm	As required to make water blocked arrangement	
3.	Extruded Semi Conductor Layer	mm	0.3	0.4
4.	Inner Insulation of XLPE, without carbon black	mm	1.2	2.43
5.	Outer Insulation with UV & Track Resistant XLPE	mm	1.1	1.2



**NEPAL'S LARGEST MANUFACTURER OF WIRES CABLES CONDUCTORS**

**POWER AND ENERGY DISTRIBUTION**

**ACSR CONDUCTORS**



- Size: 20 SQMM – 500 SQMM
- Voltage Grade: 11 KV – 400 KV

**ABC CABLES**



- Size: 2C X 10 SQMM – 1CX185 SQMM
- Voltage Grade: 1100 V

**MEDIUM VOLTAGE XLPE COVERED CONDUCTORS**

(First of its kind in Nepal)



- Size: 55 SQMM – 240 SQMM
- Voltage Grade: 11 KV – 33 KV

**COMMERCIAL AND INDUSTRIAL WIRING**

**LV POWER CABLES**



- Type: Copper and aluminium Armoured & Unarmoured
- Insulation: PVC/XLPE/HR PVC/Zero Halogen
- Size: 1.5 SQMM – 1000 SQMM
- Voltage: Up to 1.1 KV

**CONTROL CABLES**



- Type: Copper | Armoured & Unarmoured
- Single core to 37 cores
- Insulation: PVC/XLPE/HR PVC/Zero Halogen
- Size: 1.5 SQMM – 4 SQMM
- Voltage: Upto 1.1 KV

**SUBMERSIBLE CABLES**



- Size: 1.5 SQMM – 4 SQMM
- Voltage Grade: Upto 1.1 KV

**RESIDENTIAL WIRING**

**ECOWIRE-ZH**



- (Nepal's only wire with zero halogen)
- Size: 0.5 SQMM – 16 SQMM
- Voltage Grade: 1100 V

**FRLS**



- Size: 0.5 SQMM – 16 SQMM
- Voltage Grade: 1100 V

**FR**



- Size: 0.5 SQMM – 16 SQMM
- Voltage Grade: 1100 V

**CONCENTRIC CABLES**



- Size: 4 SQMM – 25 SQMM
- Voltage Grade: Upto 1100 V

**INDUSTRIAL ELECTRICAL USES**

**ENAMEL WINDING WIRES**



- Size: 9 SWG – 36 SWG

**PAPER INSULATED COPPER STRIPS**



- Size: 2 MM – 4 MM (Thickness)  
6 MM – 12 MM (Width)

**ANNEALED BARE COPPER WIRES**



- Size: 8 SWG – 18 SWG  
(4.064 mm – 1.219 mm)
- Packaging: Plastic or Wooden Reels

**47**<sup>+</sup> YEARS **INDUSTRY  
EXPERIENCE**

**2** PLANTS **STATE-OF-ART  
FACILITIES**

**72000**<sup>+</sup>  
KMPA **PRODUCTION  
CAPACITY**

**ADVANCED  
GERMAN  
TECHNOLOGY**

**500**<sup>+</sup> **EMPLOYEE  
STRENGTH**

 **STRONG  
DISTRIBUTION**

**Corporate Office:**

Ramesh Tower, Tripureswor, Kathmandu, Nepal

**Factory:**

Butwal Industrial Estate, Rupandehi, Nepal

**Contact:**

 [litmus@rameshcorp.com](mailto:litmus@rameshcorp.com)

 [www.litmus.com.np](http://www.litmus.com.np)

 **+977-9801914455**  

